

# REPUBLIC OF IRELAND - WEST COAST

## GALWAY HARBOUR AND APPROACHES

DEPTHS IN METRES  
SCALE 1:10 000

Depths are in metres and are reduced to Chart Datum, which is approximately the level of Lowest Astronomical Tide. Heights are in metres. Underlined figures are drying heights above Chart Datum; all other heights are above Mean High Water Springs.

Positions are referred to the WGS84 compatible datum, European Terrestrial Reference System 1989 Datum (see SATELLITE-DERIVED POSITIONS note).

**LOCAL HORIZONTAL DATUM**  
Positions read from chart 1904 may be adjusted by 040 minutes SOUTHWARD and 044 minutes EASTWARD before plotting on documents referred to Ireland 1975 Datum.

**SATELLITE-DERIVED POSITIONS AND CHART ACCURACY**  
Positions obtained from satellite navigation systems, such as GPS, are normally referred to WGS84 Datum. Such positions can be plotted directly on this chart. However, due to the age and quality of some of the source information, such positions may be more accurate than the charted detail.

**MARINE FARMS**  
Marine farms may exist within the areas indicated. They may not all be shown individually and their positions may change frequently. Marine farms may be marked by lit or unlit buoys or beacons. Mariners are advised to avoid these structures and their associated moorings.

**DREDGED DEPTHS**  
Dredged depths in the approach channel and within the harbour basin are subject to silting and liable to change. For the latest information, mariners are advised to consult the Harbour Master.

**MUTTON ISLAND OUTFALL**  
(53°15'0N, 9°03'3W)  
Mariners are advised not to anchor, trawl or fish in the vicinity of the outfall.

**SHOULDER BODIES**  
Vessels should avoid anchoring or proceeding to the shoalbank beds indicated on this chart.

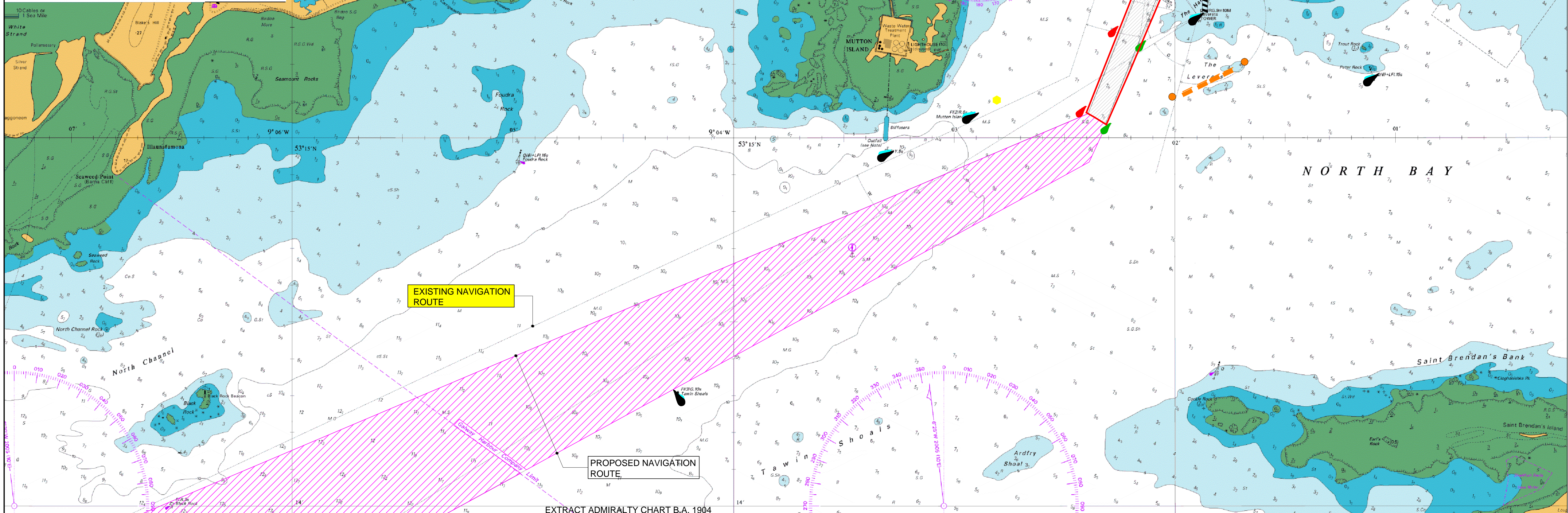
**NAVIGATIONAL MARKS:** IALA Maritime Buoyage System - Region A (Red to port).  
**Projection:** Transverse Mercator.  
**Source:** The origin, scale, date and limits of the hydrographic information used to compile the chart are shown in the Source Diagram. Depths in upright figures are from a survey of 1845. The topography is derived chiefly from Ordnance Survey of Ireland maps and aerial photography.

Tidal Levels referred to Datum of Soundings						
Place	Lat	Long	MHW	MHWN	MLWN	MLWS
Galway	53°16'	9°03'	5.1	3.9	2.0	0.6

**LEGEND**

- HARBOUR EXTENSION
- DREDGE AREA
- H.W.L. TO L.W.L. 0.0m C.D.
- 0.0m TO -2.0m C.D.
- 2.0m TO -5.0m C.D.
- NEW NAVIGATION ROUTE
- OLD NAVIGATION ROUTE
- EXISTING NAVIGATION LIGHTS
- PROPOSED NAVIGATION LIGHTS
- PILE MARK "PERCH"
- TRANSIT LIGHTS
- WHITE LIGHT

SEE DRG 2139-2134 FOR DETAIL OF NAVIGATION LAYOUT PLAN



- NOTES:**
- FIGURED DIMENSIONS ONLY TO BE TAKEN FROM THIS DRAWING.
  - ALL DRAWINGS TO BE CHECKED BY THE CONTRACTOR ON SITE.
  - ENGINEER/EMPLOYERS REPRESENTATIVE, AS APPROPRIATE, TO BE INFORMED BY THE CONTRACTOR OF ANY DISCREPANCIES BEFORE ANY WORK COMMENCES.
  - THE CONTRACTOR SHALL UNDERTAKE A THOROUGH CHECK FOR THE ACTUAL LOCATION OF ALL SERVICES/UTILITIES, ABOVE AND BELOW GROUND, BEFORE ANY WORK COMMENCES.
  - ALL LEVELS SHOWN RELATE TO CHART DATUM.

Rev	Date	Description	By	Chkd.
A	JAN 2014	FIRST ISSUE	DW	JPK

Client:	GALWAY HARBOUR COMPANY	Prepared by:	DW
Project:	GALWAY HARBOUR EXTENSION	Checked:	BH
Title:	ADMIRALTY MAP SHOWING NAVIGATION ROUTE	Date:	JAN 2014
		Project Director:	J.P. KELLY
		Drawing Status:	Planning & EIS
		Scale @ A1:	1/10,000 A3 1/20,000

**TOBIN**  
Patrick J. Tobin & Co. Ltd.

TOBIN Consulting Engineers,  
Fairgreen House, Fairgreen Road,  
Galway, Ireland.  
tel: +353-(0)91-565211  
fax: +353-(0)91-565398  
e-mail: galway@tobin.ie  
www.tobin.ie

Revision:

# A

Drawing No.: 2139-2103