

CLIMATE & AIR QUALITY

- Shipping goods by sea has the lowest carbon transport footprint.
Ship 1% rail 10% road 100%
- Macro & Micro Climate issues will be discussed
- The New Port will require less vessels and ship movements as boats will be bigger, fewer, more efficient and environmentally friendly
- Existing and future port air quality regarding dust and fumes will be studied and compared



Galway Harbour Company



Biospheric engineering Ltd.
PARTNERS IN SUSTAINABLE DEVELOPMENT



TOBIN
Patrick J. Tobin & Co. Ltd.

AIRBOURNE NOISE

- Survey Existing Noise from Shipping, Loading / Unloading and Transport of Goods to and from the Port
- Port Activity Noise is now being generated in the existing dock area i.e. within city area
- Noise from the New Port will be moved seaward
- Port Operations at the new location will be undertaken with more modern, quieter equipment



UNDERWATER NOISE

- The amount of underwater construction noise from the proposed dredging, drilling, blasting and pile driving will be studied
- The effects of such underwater noise on fish (salmon and eel) and marine mammal (seals, porpoises and dolphin) and their behaviour will be studied
- The effects of shallow water and the soft muddy/sandy bottom in the area to dampen underwater noise transmission are being studied
- Noise control measures appropriate to the construction of the project are being developed in conjunction with the wildlife contributors



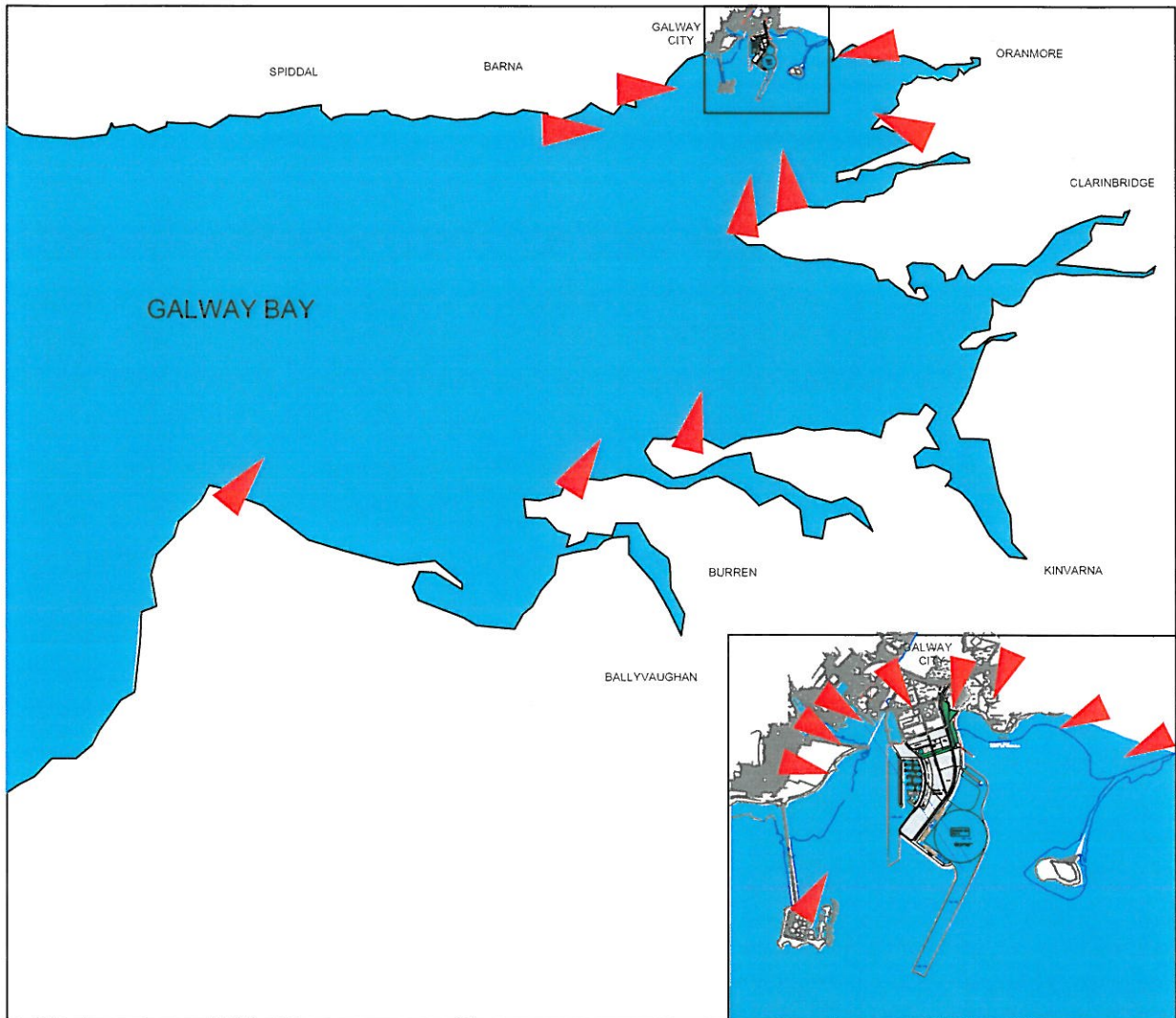
Galway Harbour Company




Biospheric engineering Ltd.
PARTNERS IN SUSTAINABLE DEVELOPMENT



SITE AMBIENCE AND VIEWS



- Location of view for analysis of proposed harbour development 
- Analysis to examine the existing and potential impact on the view



Galway Harbour Company

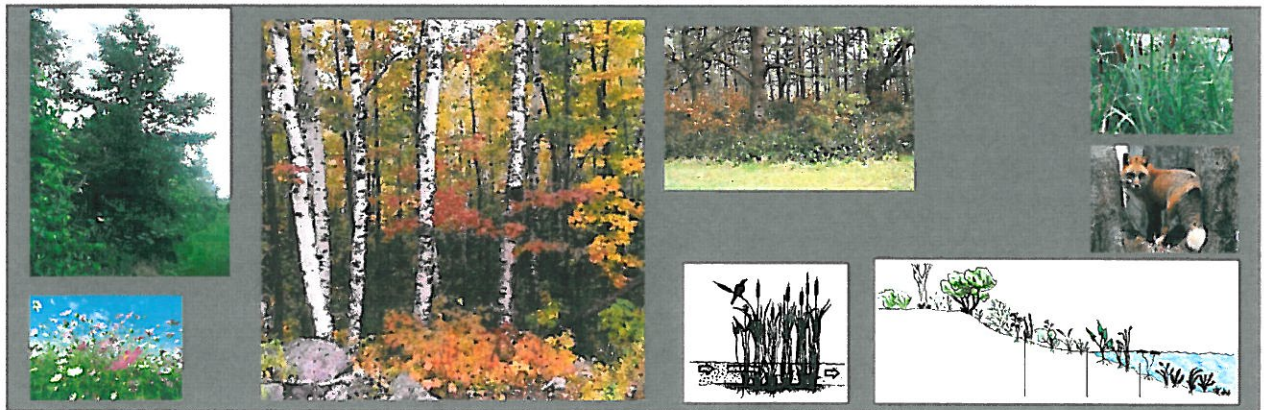
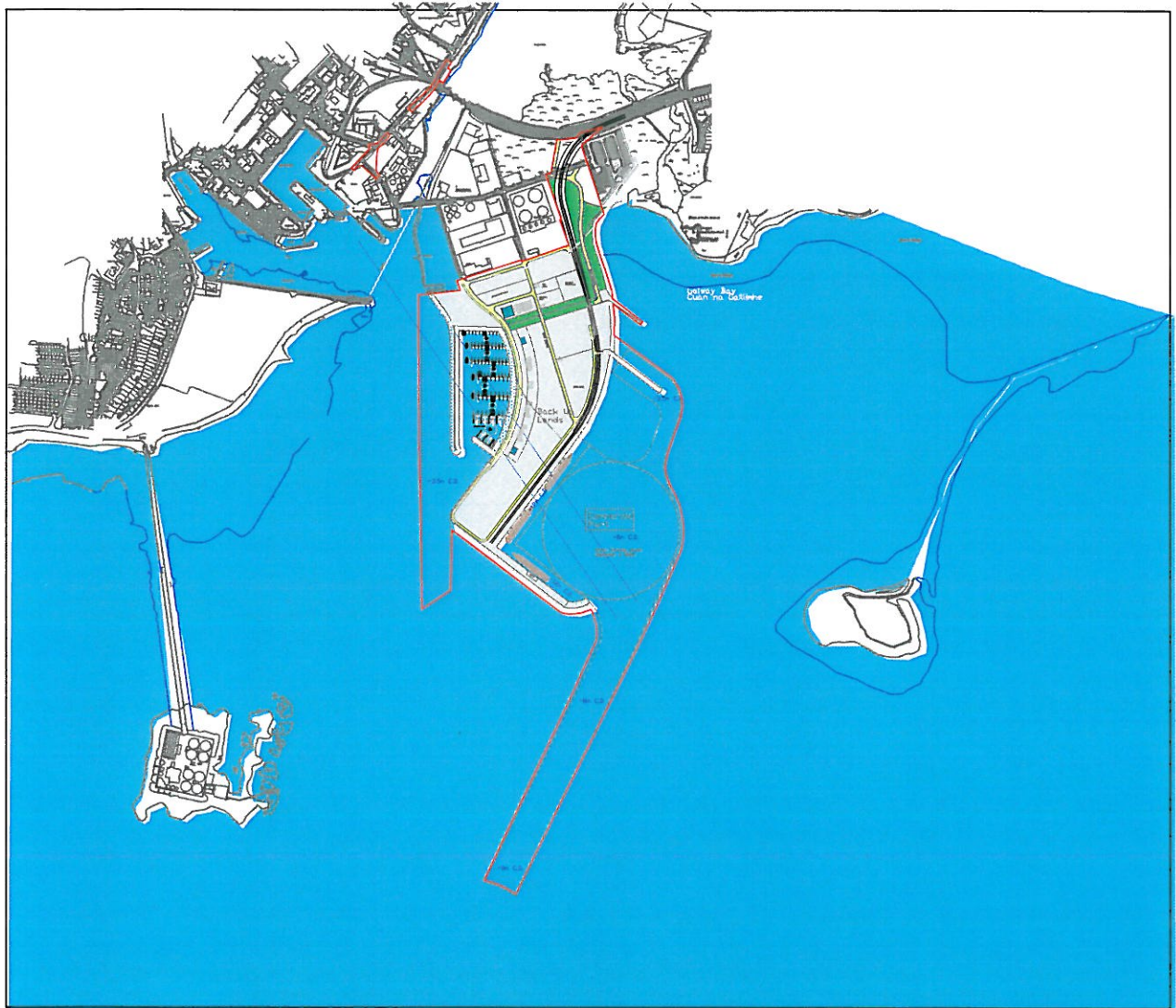


P. C. Roche and Associates
landscape architects and site planners
48 Seaford Road West
Clontarf
Dublin 8, tel: 0117240, fax: 012044 email: pc@pcroche.com



TOBIN
Partners in Time & Co. Ltd

LANDSCAPE MASTERPLAN AND WILDLIFE CORRIDORS



Galway Harbour Company



P. C. Roche and Associates
landscape architects and site planners
48 Sarsfield Road, West
Dublin 4
Dublin 4, tel: 011 7342 Fax: 013004 email: sales@pcroche.com



Patrick J. Tobin & Co. Ltd.

Archaeology and Cultural Heritage

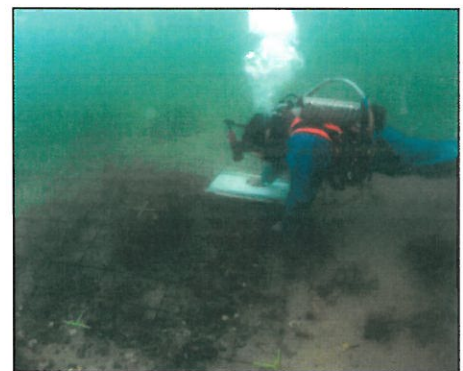
Terrestrial & Underwater
Archaeology

Underwater Geophysical Survey

Geophysical Anomalies –
Possible Shipwrecks

Archaeological Dive Truthing

Sediment Depth – Possible
Shipwrecks



Galway Harbour Company



laurence dunne
archaeology



Archaeology and Cultural Heritage

Research Study, Field Study,
Geophysical Analysis and
Dive Survey



Record of Monuments and
Places



Topographic Files, National
Museum of Ireland

Aerial Photography



Shipwreck Inventory of Ireland



Galway Harbour Company



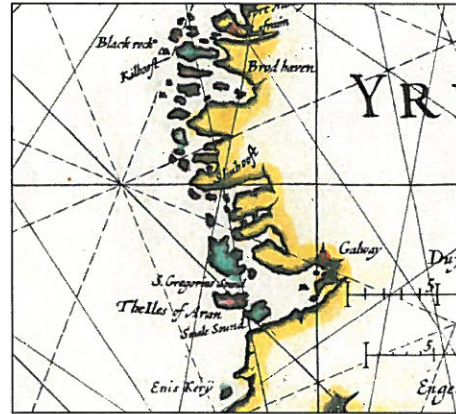
laurence dunne
archaeology



Archaeology and Cultural Heritage

Intense Archaeological Activity
– Maritime & Terrestrial

Cartographic / Photographic
Sources



Lough Atalia Bridge



Shoreline Field Assessment

Preservation Methods



Galway Harbour Company



laurence dunne
archaeology



TOBIN
Patrick J. Tobin & Co. Ltd.

ARCHITECTURAL STUDIES OBJECTIVES

- New Harbour to be visible, accessible and attractive.
- Provide a form appropriate to its bay setting.
- Maintain its umbilical cord to the city.
- Establish connections to the city and waterfront routes.
- Respond to its nearest land boundaries.
- Provide for the public realm.
- Create a new maritime identity in the bay.
- Provide a positive arrival for Cruise Passenger traffic.
- Separate pedestrian, vehicular and rail movement.
- Exploit its amenity, recreational, leisure and event potential.

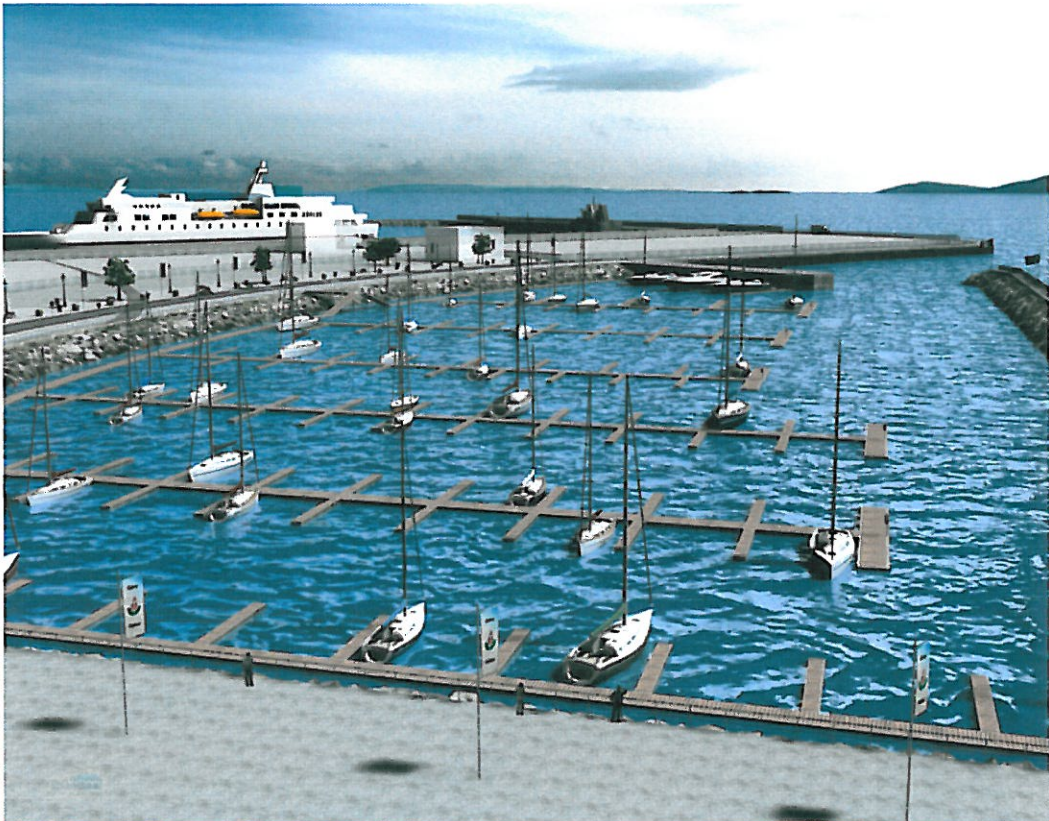


ARCHITECTURAL STUDIES VISION

- Re-establish its maritime visibility in a modern expanded city.
- Retain its visual and symbolic connection to the city centre.
- Extend the city's network of waterfront amenity routes, leisure facilities and recreational areas.
- Provide a welcoming hand to all sailing craft.
- Create a new harbour identity and portscape.
- Be outward looking and with a view to the future.



CONCEPTUAL IMAGES



VOLVO OCEAN RACE



Galway Harbour Company

RODDY MANNION ARCHITECTS

