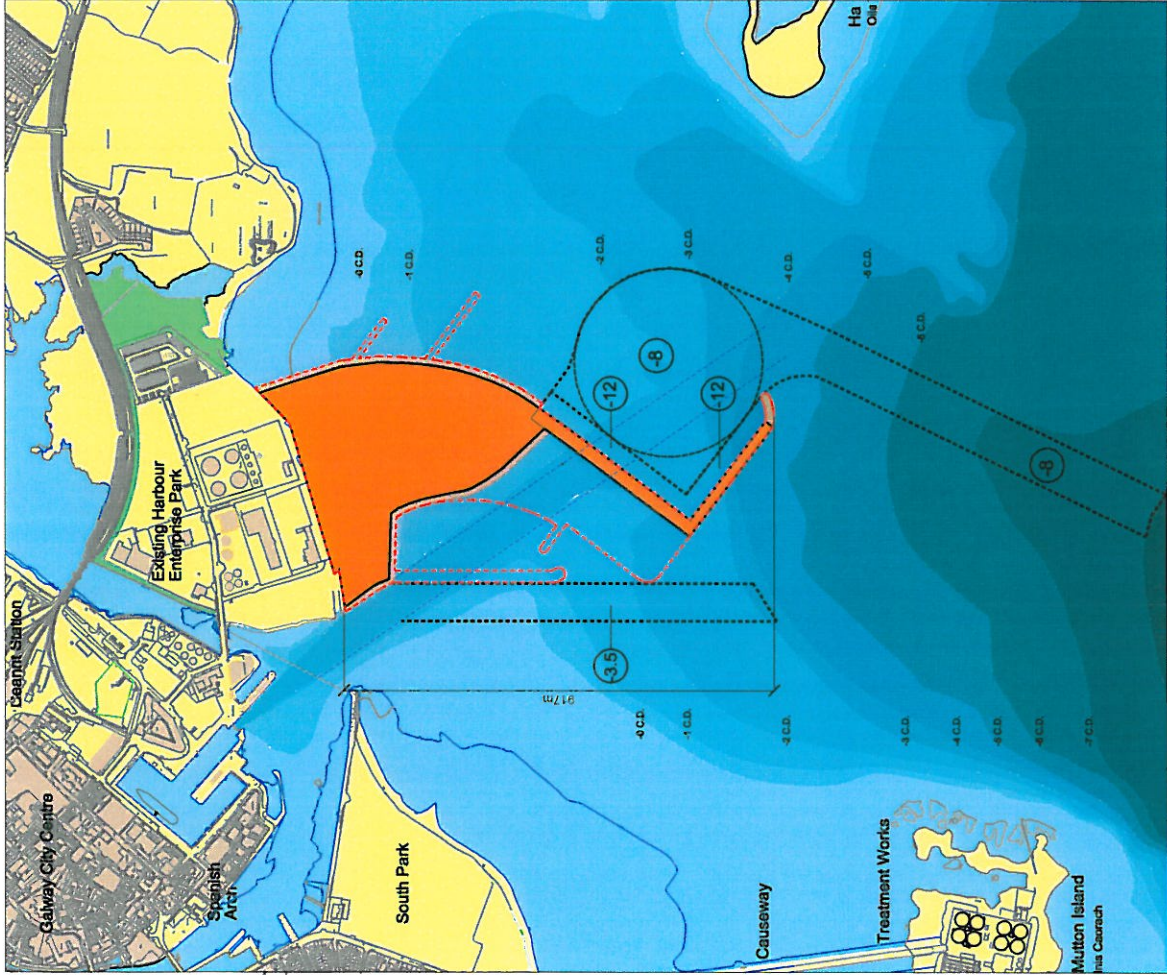
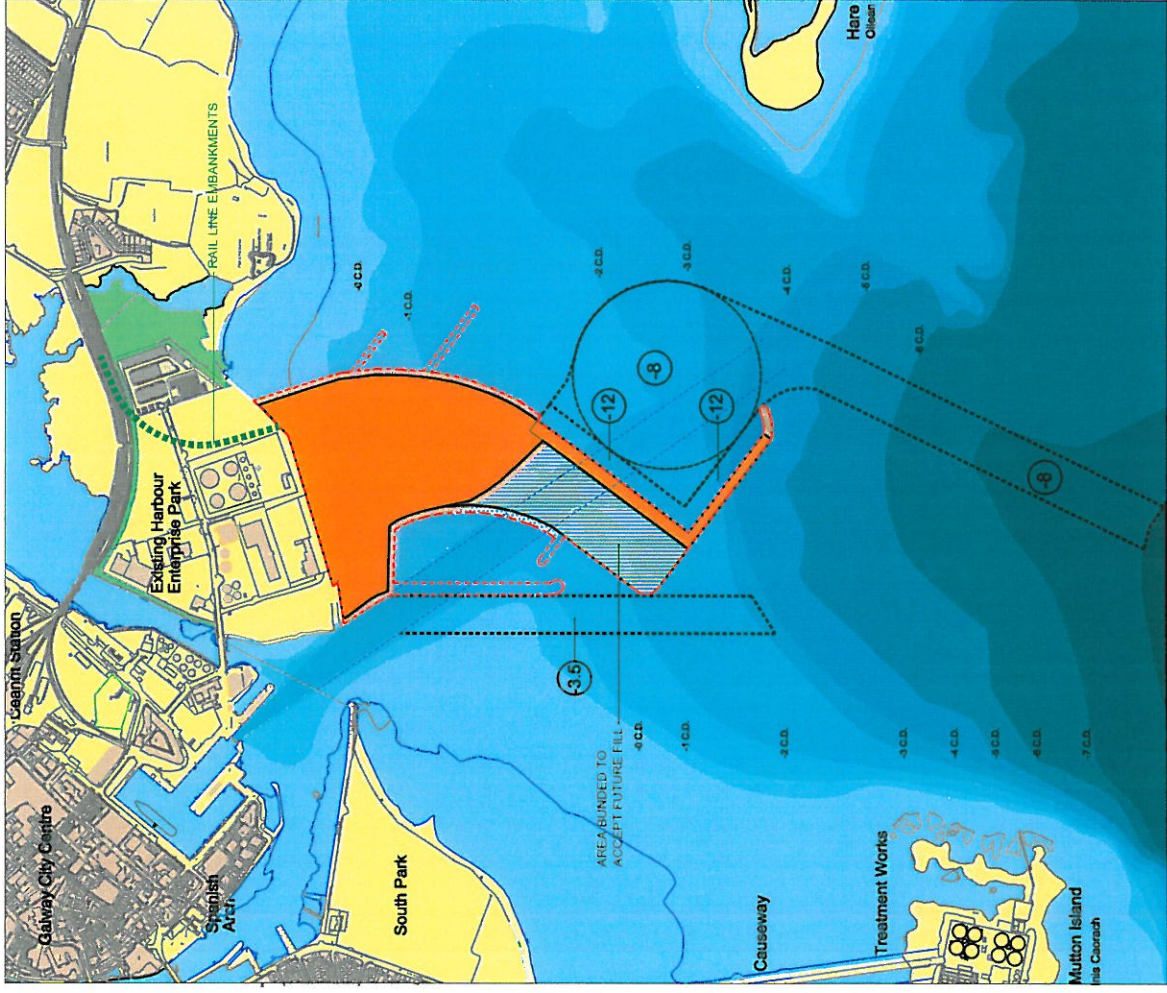


CONSTRUCTION STAGES



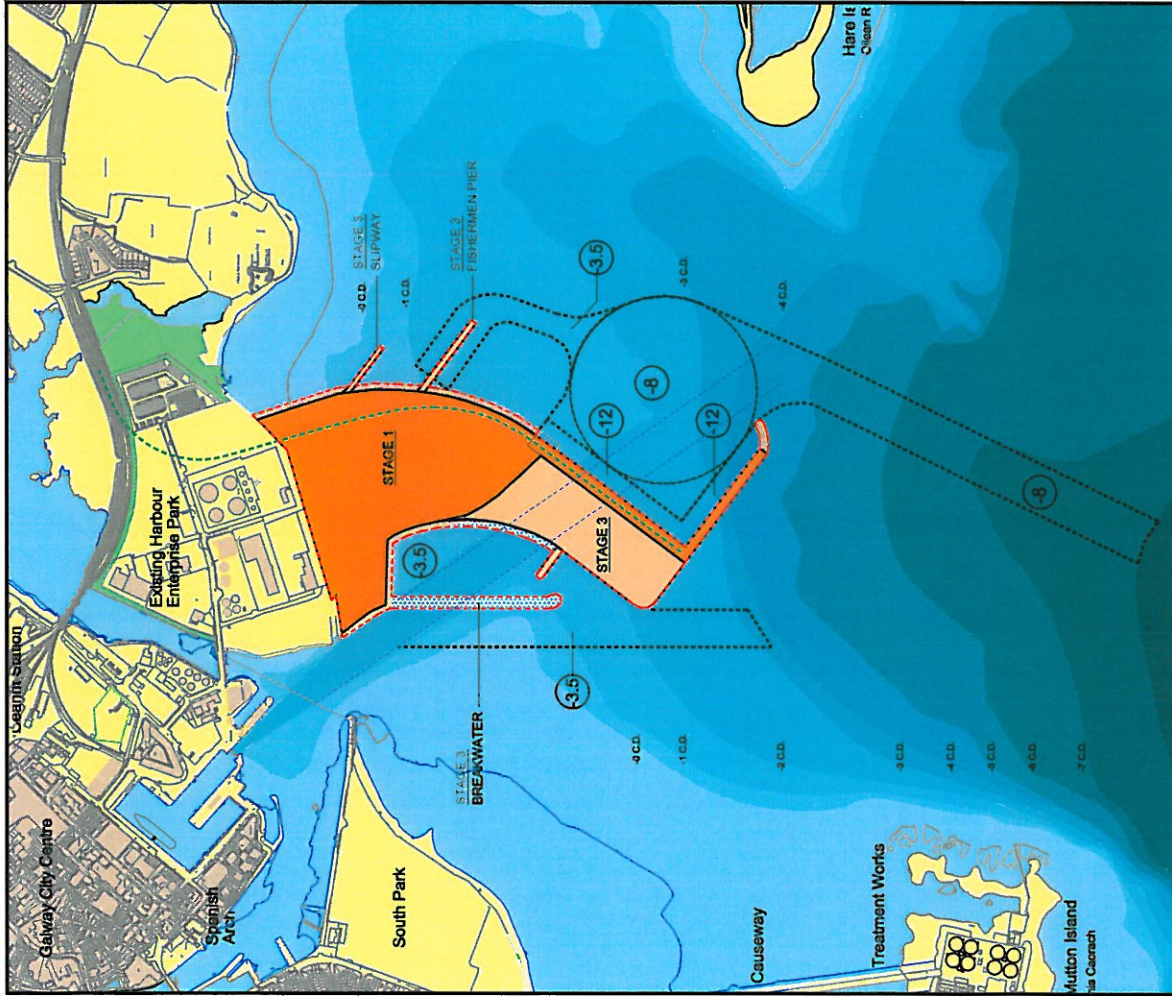
- STAGE 1**
- 17.32 HA OF LAND RECLAIMED
 - BERM OF QUAY COMPLETE
 - NEW CHANNEL DEEPENED TO -8.0M CONTOUR
 - NEW CHANNEL TO OLD POINT TO -3.5M



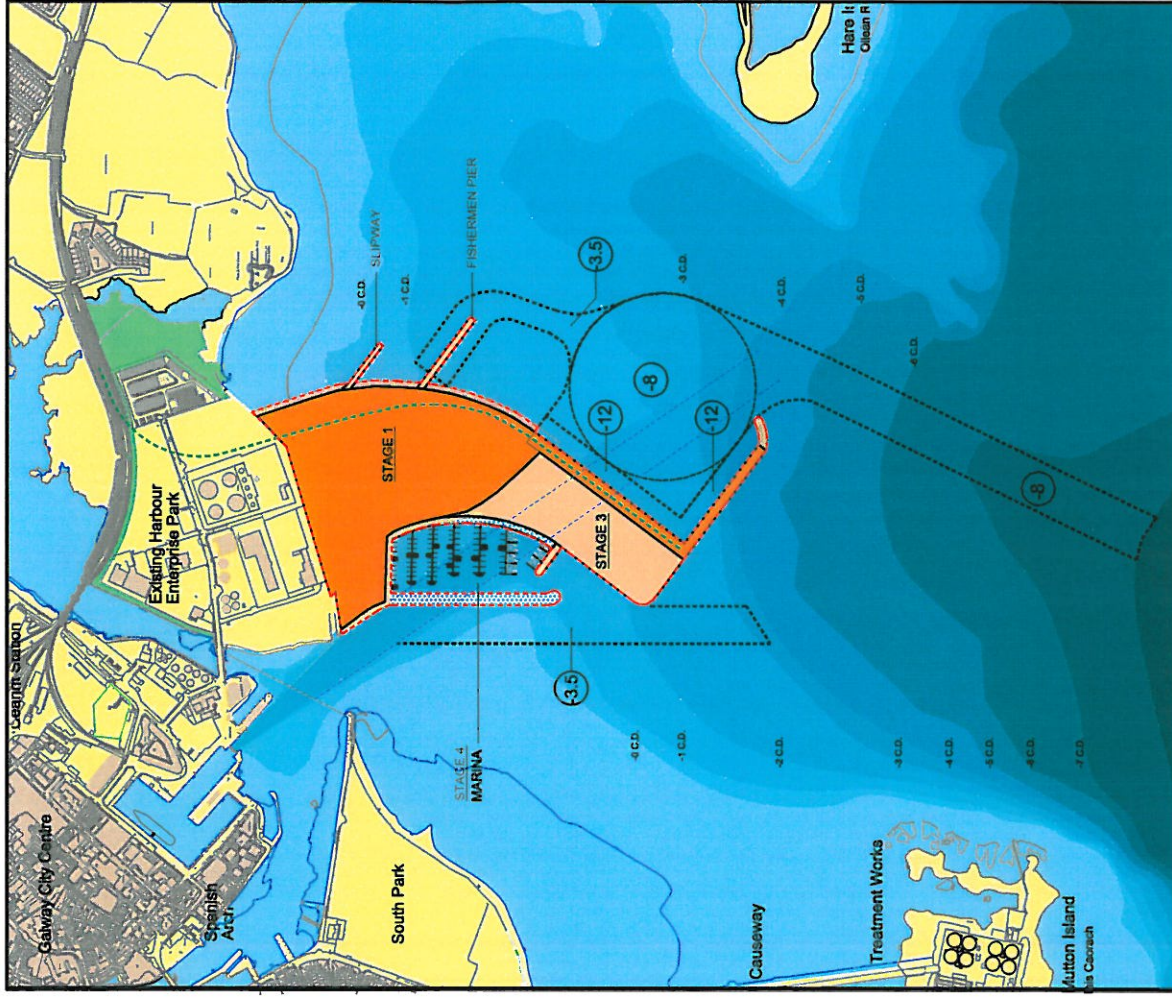
- STAGE 2**
- STAGE 1 BUND COMPLETE TO ACCEPT FUTURE FILL
 - RAIL LINE EMBANKMENTS COMPLETE



CONSTRUCTION STAGES



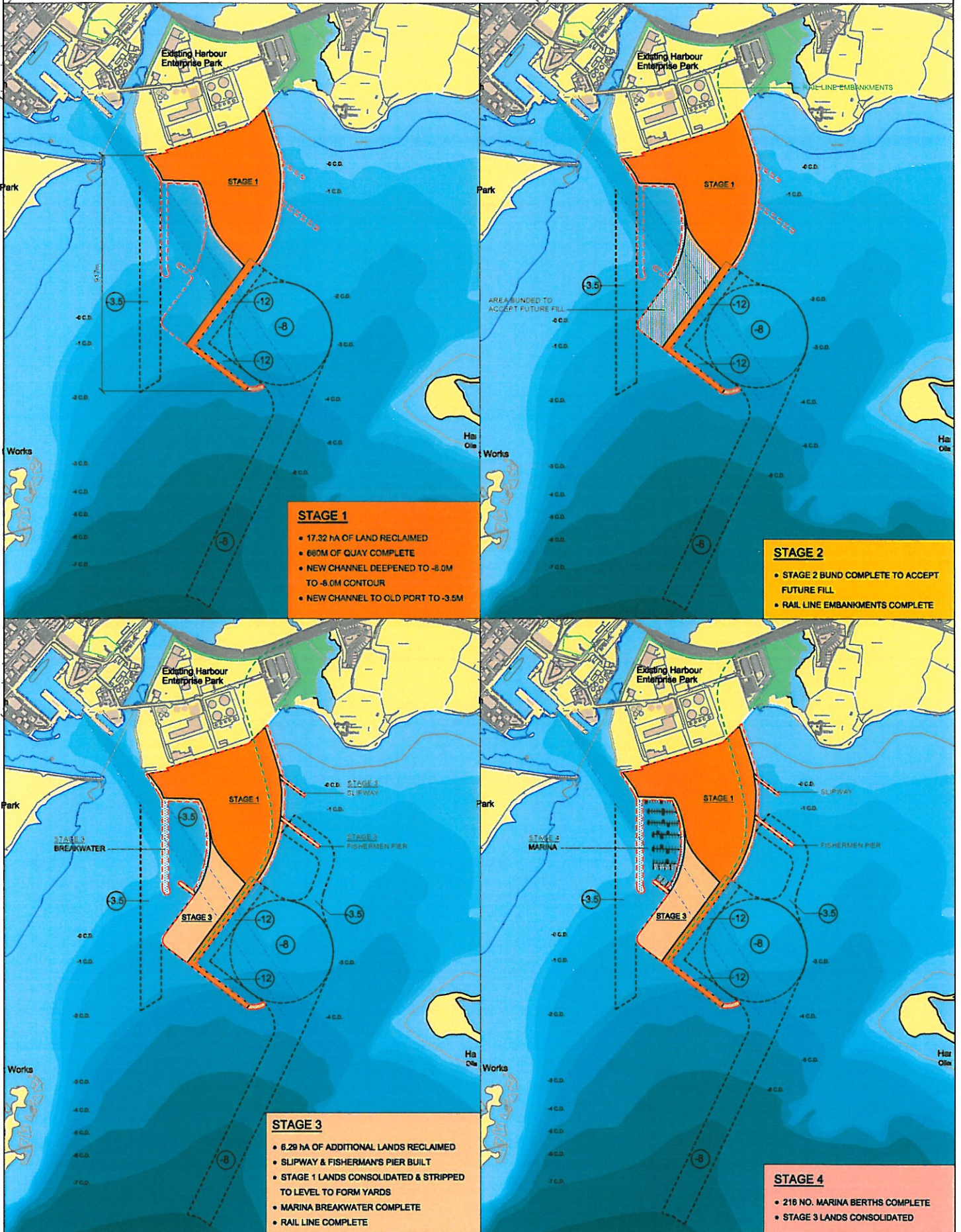
- STAGE 3**
- 6.28 HA OF ADDITIONAL LANDS RECLAIMED
 - SLIPWAY & FISHERMEN'S PIER BUILT
 - STAGE 1 LANDS CONSOLIDATED & STRIPPED TO LEVEL TO FORM YARDS
 - MARINA BREAKWATER COMPLETE
 - RAIL LINE COMPLETE



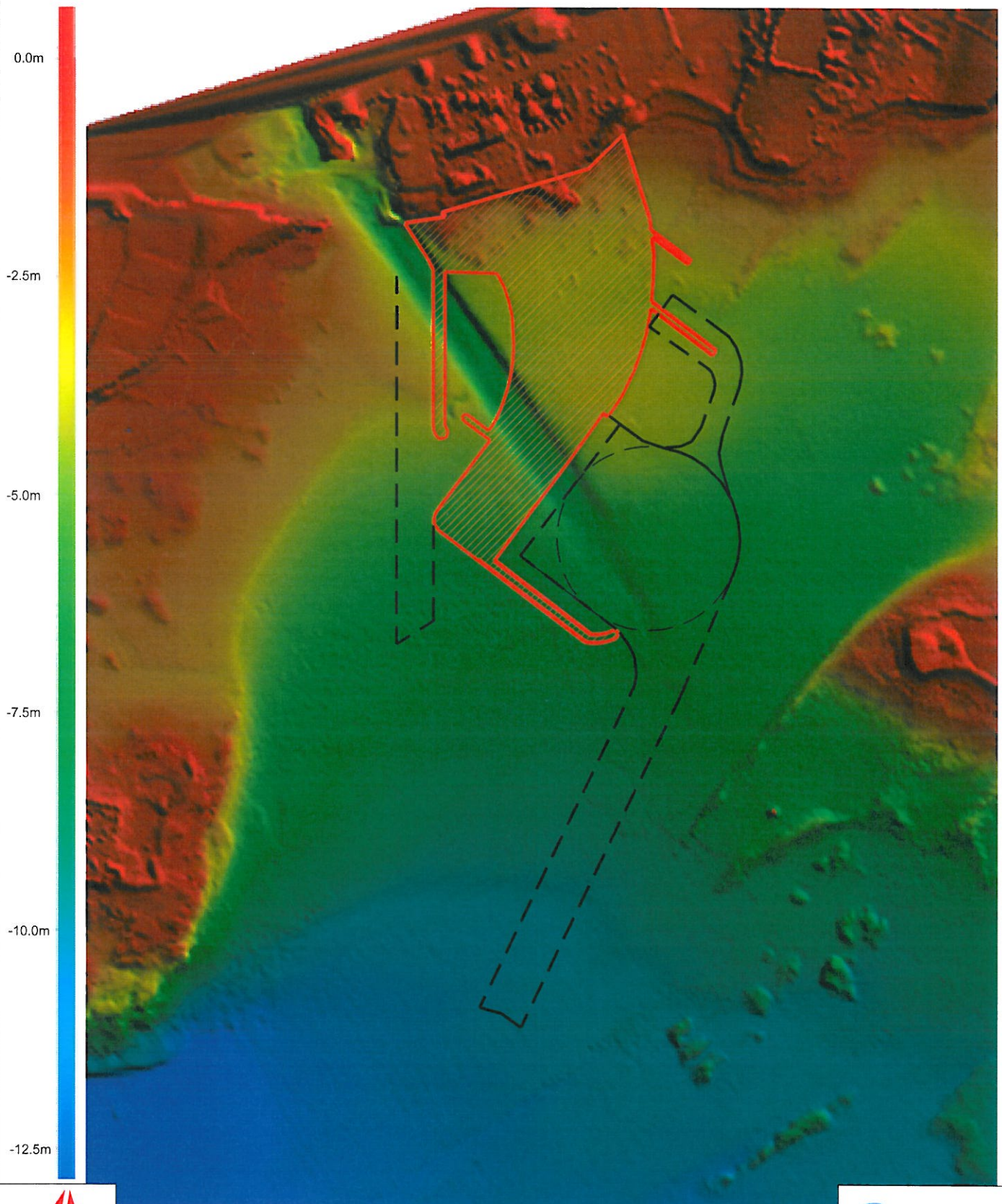
- STAGE 4**
- 216 NO. MARINA BERTHS COMPLETE
 - STAGE 3 LANDS CONSOLIDATED



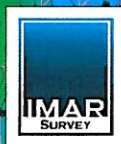
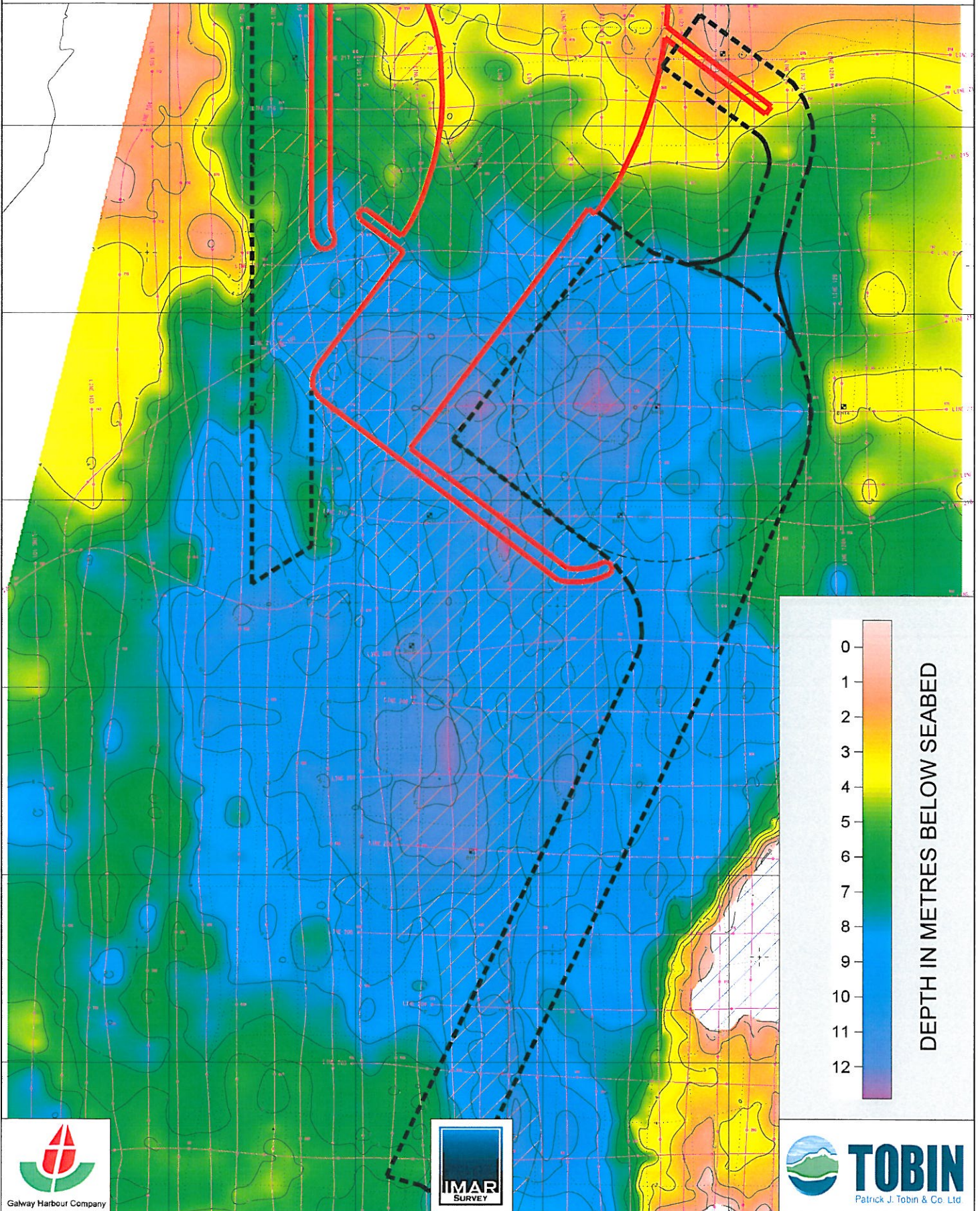
CONSTRUCTION STAGES



LIDAR SURVEY (DEPTH TO BED LEVEL)



IMAR SHALLOW SEISMIC SURVEY (DEPTH BELOW BED TO ROCK LEVEL)



BOREHOLE INVESTIGATION OF MARINE SOILS & ROCK

